

XL LIGHTWEIGHT 13 AXLE



XL Lightweight 13 Axle West Coast

YOUR SOLUTIONS-BASED HAULING PARTNER



XL Lightweight 13 West Coast

LIGHTWEIGHT ADVANTAGE

The XL Lightweight 13 Axle weighs roughly **10,000 lb less than the market norm**. 10,000 lb in weight savings results in 10,000 lb more payload. It hauls loads that would normally require 19 axles, on 13 axles.



XL Lightweight 13 East Coast

REVOLUTIONARY DESIGN

The XL Lightweight 13 Axle combines an XL 3 Axle Jeep, 170 Mechanical Gooseneck and an XL 3 Axle Booster to create a revolutionary, **custom-engineered multi-axle set-up**.



XL Lightweight 13 West Coast

SUPERIOR VERSATILITY

The XL Lightweight 13 Axle can be configured to fit either **East Coast or West Coast regulations**. An abundance of options enable the 13 Axle to handle whatever extra-heavy transportation challenge you have.

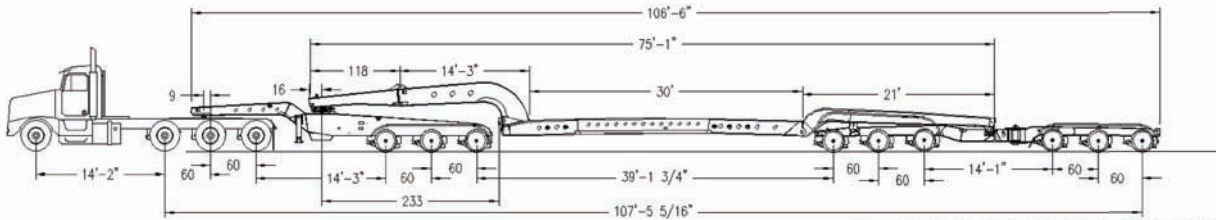
BUILT WITH YOU IN MIND

- Use 13 axles to haul loads that would otherwise require 19 axles
- Haul wind, construction and mining equipment such as 2.5 and 2.75 megawatt wind turbines and wheel dozers
- **118" flip neck that extends a 14'3" upper deck**
- 30' main deck boasts a 26" loaded deck height and 6" ground clearance
- 21' rear deck has 44" loaded deck height
- I-beams made from one piece web and flange and then welded on all sides.
- All XL Specialized Trailers' products go through the new, premium paint process. XL paint includes a **full 1 year warranty**.
- Always striving to surpass market standards, all XL Specialized Trailers' products feature a **5 year structural warranty**.

FIND YOUR SPECIALIZED SOLUTION TODAY

visit xlspecializedtrailer.com

XL LIGHTWEIGHT 13 AXLE



XL LIGHTWEIGHT 13 AXLE WEST COAST
 CAPACITY: 170,000 LB IN 10'
 OAL: 65' 3" | OAW: 120"

XL 170 MECHANICAL GOOSENECK WEST COAST SPECS

GOOSENECK

MECHANICAL GOOSENECK
 14' 3" LONG
 16" KING PIN SETTING
 115" SWING CLEARANCE
 48" 5TH WHEEL HEIGHT
 FRAME REINFORCEMENT, AIR, ELECTRIC
 AND BRACKETS FOR 142" FLIP NECK EXT.

MAIN DECK

30' LONG
 26" LOADED DECK HEIGHT
 6" GROUND CLEARANCE
 2" OAK DECKING RAISED BETWEEN MAIN
 BEAMS AND OUTSIDE BEAMS ONLY
 FAB 12" CROSS-MEMBERS ON 24" CENTERS
 2 BEAMS 20"; 2 BEAMS 16" SIDE BEAMS
 (10) BENT D-RINGS PER SIDE

T-DECK

FIRST 8' SECTION OF MAIN DECK MAIN
 BEAMS ONLY
 NEXT 10' SECTION 114" WIDE
 FINAL 12' SECTION MAIN
 BEAMS ONLY

REAR DECK

12' LONG
 44" LOADED DECK HEIGHT
 NO BOLSTERS
 16 GAUGE INDIVIDUAL STAINLESS STEEL
 WHEEL COVERS
 FRAME REINFORCEMENT FOR THREE AXLE
 BOOSTER BRACKETS, AIR & ELECTRIC
 MANUAL RIDE HEIGHT CONTROL
 RAISE AND LOWER VALVE
 CA LEGAL WEST COAST SET UP

SUSPENSION

CUSH / 25,000 LB AIR RIDE

AXLES

(3) 30,000 NOMINAL, 97 1/2" TRACKING
 60" AXLE SPACING
 NO ABS, SPRING BRAKES ON 1 AXLE
 DISC BRAKES

WHEELS & TIRES

6.75 X 17.5 / ALUMINUM MILLED INSIDE &
 OUTSIDE / DISC / PILOTED HUBS
 245 / 70R / 17.5 TIRES

LIGHTING

D.O.T APPROVED 12V SEALED
 GROTE HARNESS
 RUBBER MOUNTED LED LIGHTS
 (1) MID-TURN SIGNAL PER SIDE
 (2) CLEARANCE LIGHT PER SIDE
 7 POLE ELECTRICAL SOCKET
 2 TAIL LIGHT PACKAGE WITH
 ALUMINUM COVER

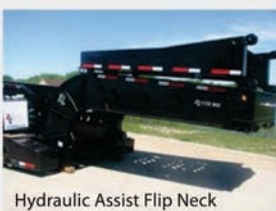
NEW INDUSTRY-LEADING PAINT PROCESS

1 YEAR WARRANTY
 BLACK, IH RED, OR NEW CAT YELLOW
 AIR & ELECTRIC DONE AFTER PAINT

AVAILABLE MODELS

XL 170 MG: WEST COAST
 XL 170 MG: EAST COAST
 OTHER CAPACITIES AVAILABLE
 UPON REQUEST

OPTIONS



Hydraulic Assist Flip Neck



XL 2 Axle Power Booster

POPULAR OPTIONS

XL Jeep with hydraulic
 hatbox
 Aluminum fenders
 West Coast or East Coast
 configuration

Hydraulic Assist Flip Neck
 XL Booster
 XL Power Booster
 Different lengths
 Many more available